

# SAFARILAND TRAINING GROUP

## "THE WALLBANGER"

INSTRUCTOR COURSE



DEFENSE TECHNOLOGY



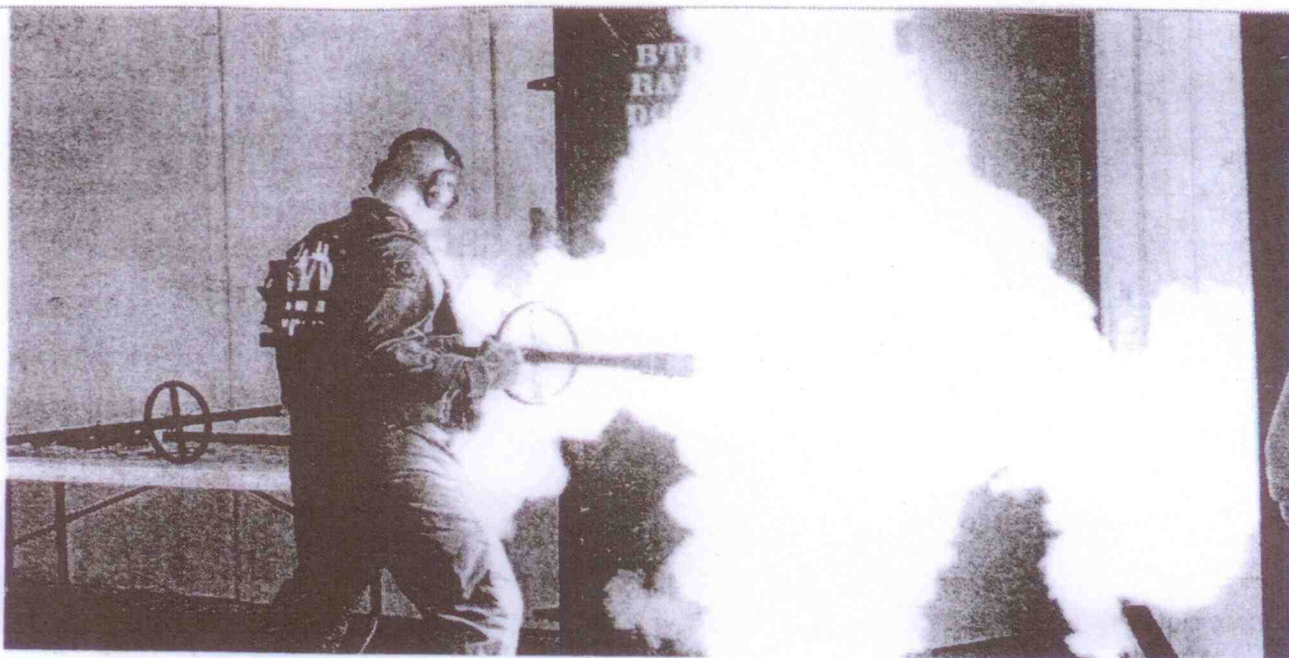
Safariland Training Group (STG) programs are for educational purposes only and are designed to enhance knowledge and skills used by law enforcement, corrections, military, and licensed security personnel (collectively, "law enforcement") in their mission to protect and serve. STG does not dictate to law enforcement agencies any policies or procedures for the selection or use of any of any law enforcement products, including those manufactured or sold by Safariland LLC. The development and implementation of Policy, General Orders or Standard Operating Procedures is solely the responsibility of the law enforcement agency or department. Although an agency or department may use STG training and/or courseware in support of its internal training of officers, Safariland is not responsible for the equipping or use of Safariland products, or any other company's products, in the course or scope of an officer's duties.

**DISCLAIMER:** Safariland, LLC. or Safariland Training Group (collectively, "Safariland") does not authorize any agency personnel or trainer(s) to represent or act on behalf of Safariland. A Certificate of Completion of an STG instructor-level course does not authorize the recipient to act as an agent or representative of Safariland. Agency personnel or trainer(s) shall not represent or give the appearance of representing Safariland during any training that may or may not be provided by the agency personnel or trainer. STG courseware is subject to change without prior notice. Although, as part of the completion of an STG instructor-level course, Safariland authorizes the agency personnel or trainer to use STG courseware, STG does not authorize the reproduction or use of Safariland trademarks or any other markings identifying Safariland or Safariland Training Group. Agency personnel or trainers conducting their independent training courses shall specifically disclose that their training course is not by or on behalf of Safariland nor authorized, sanctioned or sponsored by Safariland. It is impossible to predict, discuss or plan for every circumstance or situation which might arise in the course of a law enforcement officer's duties. Each law enforcement officer must always take into consideration his/her experience, physical abilities, professional responsibilities, department policies and procedures and legal obligations. Agencies and law enforcement officers must evaluate the training and techniques contained in STG courseware and determine for themselves the proper action under the specific circumstances confronted. Law enforcement is a dynamic and interactive profession which requires constant use of judgment and evaluation of the situation. Accordingly, Safariland does not guarantee or warrant the information contained in STG courseware. Any implied warranties are expressly disavowed.

**SAFETY IS THE FIRST RULE IN HANDS-ON TRAINING.** Training area should be free of structural, floor/ground and/or other types of hazards to people. It should be a place where people can come together to learn and train in unobstructed surroundings that are safe for everyone. Keeping hands-on training accident free is one objective and building psychomotor confidence in a course participant is another objective of this course. Hands-on training brings with it a certain degree of risk of personal injury. By participating in course activities, the participant assumes this risk as part of his/her participation, as well as responsibility, for following safety rules and procedures. The training intensity most likely to accomplish these two objectives within the STG course schedule would be static rather than dynamic or street simulations (scenario based).

Safariland Training Group  
The WallBanger Instructor Course

©2010 Safariland 012910A-0210



## Table of Contents

### The WallBanger Instructor Course

---

#### **SECTION ONE**

WallBanger

5

#### **SECTION TWO**

OC Blaster

27

#### **SECTION THREE**

DoorKey

35





Dear Student,

The importance of less-lethal options is a growing [response] factor within the law enforcement, military, corrections and security communities. Our training programs are designed to not only make you confident and capable in using our products but also provide you with necessary information and materials to develop and implement training programs that are best suited for your agency's operational needs.

Quality training, hands - on experience and product knowledge help increase officer safety. Our courseware and the instructor who teaches that material are not the final and definitive word on the subject. Please keep in mind that future federal or state legislation, new case law, new and emerging advances in technology may also influence how such materials are utilized. As a result, we recommend continuous education and training to assist you in guiding your agency's training programs forward.

The Safariland Training Group is here to help you maintain both your credentials and credibility in the classroom, in the field, and in court through our continuing education (CE) programming. Our CE programming is intended to provide you with up to date information on technology advances and best practices/strategies for deploying Safariland less-lethal products in a safe and judicious manner. Check out our training calendar for the next program/course that best suits your [agency] CE needs and schedule or e-mail us, if there is a course you want but is not listed on our calendar.

Your agency's in-service/recruit training may be based on the courseware you received by attending this program/course. To further aid your agency, you may duplicate this program courseware to facilitate our product's safe and judicious use in either training or at an incident. Please consider including your agency's policies and procedures within the training curriculum that you develop and implement for utilizing our product(s) and/or course materials.

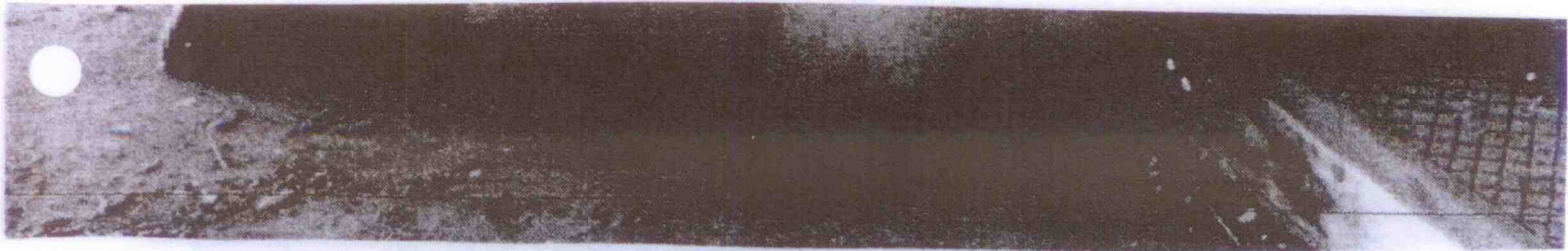
When you are interested in additional training, we hope you look to Safariland Training Group for that training and/or updates that we offer to the industry. You may search our website at [www.safariland.com/training](http://www.safariland.com/training) for a full list of our courses. You may reach us by e-mail at [training@safariland.com](mailto:training@safariland.com) or by telephone at 800-733-3832 Ext 11798 inside the United States or 904-741-1798 outside it.

Sincerely,


Sandy Wall  
Director of Training  
Safariland Training Group




## SECTION ONE | THE WALLBANGER











### "THE WALLBANGER" INSTRUCTOR COURSE

This course is designed to provide you with the basic skills necessary to safely and effectively operate and instruct the use of "The WallBanger" when a distraction into a stronghold objective is required.

www.safariland.com 800.347.1200



Together, We Save Lives.™



### Course Schedule:

- Classroom
  - Pre-test
  - Lecture
  - Q&A
- Practical Exercise
  - Assembly
  - Arming
  - Rehearsals
  - Dry fires
  - Initiations
- Classroom
  - Video review
  - Critiques
  - Post Test
  - Certificates

www.safariland.com 800.347.1200


Together, We Save Lives.™

NOTES

---

---

---

---

---

---

---

---

## Introductions



- Play video
- Safety rules
  - Safety officers
  - Cease fire
  - Protective clothing
  - No horseplay
  - Arming the device
- Defense Technology Safe Handling Procedures

www.safariland.com 800.347.1200

SAFARILAND Together, We Save Lives.™

## Planning



- Appropriate use
- Rehearsals
  - Mentally and physically brief the team
  - Signals and communication
  - Primary and secondary options
- Evaluation of target
  - Construction of windows, or the area where munitions are to be deployed
  - Screens
  - Glass construction
  - Burglar bars
  - Possible over-blast or secondary projectiles

www.safariland.com 800.347.1200

SAFARILAND Together, We Save Lives.™

NOTES

---

---

---

---

---

## Planning (continued)



- Safety concerns
  - Children and Elderly
  - Explosive/flammable environment
  - Early warning issues
  - Firefighting equipment
  - Officer down procedures
  - Abort or bunker options

www.safariland.com 800.347.1290

SAFARILAND Together, We Save Lives.™

## Team Assignments



- Choosing a grenadier
  - Strong
  - Athletic/coordinated
  - Experienced
  - Operator Certified



- Position of cover man on the distraction team

www.safariland.com 800.347.1290

SAFARILAND Together, We Save Lives.™

NOTES

---

---

---

---

---

---

---

---



## Pole Bag and Implement Bag



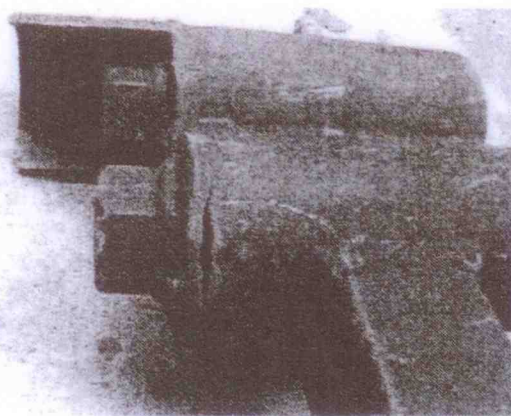
www.safariland.com 800.347.1200

SAFARILAND Together, We Save Lives.™

## Preparing TheWallBanger



- Inspection
  - Cracks
  - Defects
  - Breaks
  - Abnormalities



www.safariland.com 800.347.1200

SAFARILAND Together, We Save Lives.™

NOTES

---

---

---

---

---

---

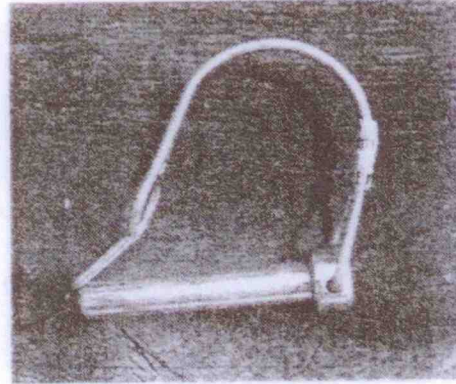
---

---

### Assembly



- Handle and extensions
  - 5' handle, extensions, handles, and all implements are attached with the round clasp hitch pin.



www.safariland.com

800.347.1200

SAFARILAND

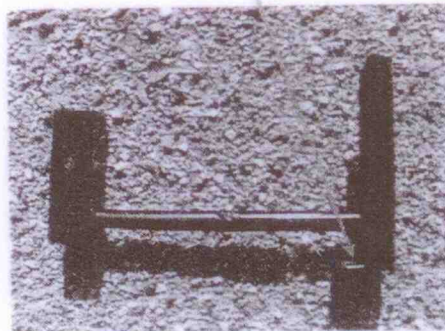
"Together, We Save Lives."

### Assembly

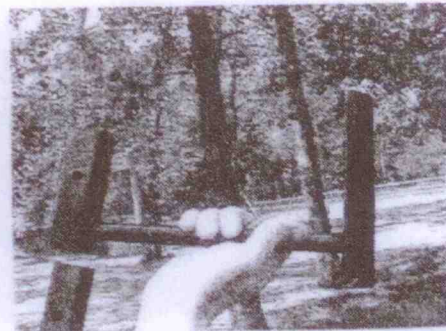


- Pin Grip Handle on 5' pole with hitch pin (holes to the rear)

Holes for pin guns to the rear



Place Pin Grip onto pole



www.safariland.com

800.347.1200

SAFARILAND

"Together, We Save Lives."

NOTES

---

---

---

---

---

---

---

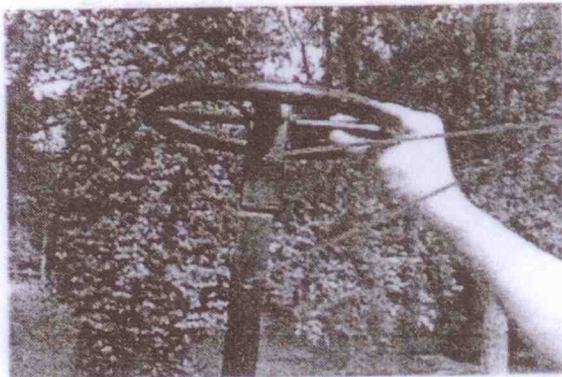
---



## Assembly



- Place Wheel Handle onto 68" pole



Line up holes on one side

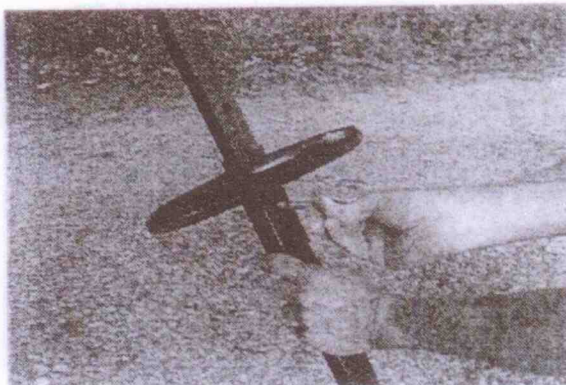
www.safariland.com 800.347.1200

SAFARILAND Together, We Save Lives.™

## Assembly



- Use Hitch pin to attach Wheel Grip Handle



Line up holes on one side

Three holes on the pole are for ergonomic reasons

www.safariland.com 800.347.1200

SAFARILAND Together, We Save Lives.™

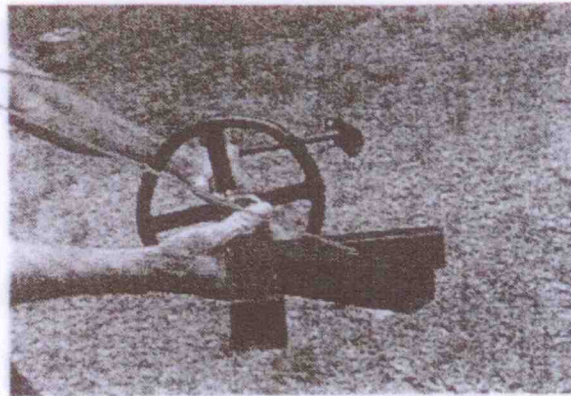
NOTES

### Assembly



- Attach 3-Prong Fixed Positional Head and adjust to desired angle. Fixed head is usually pointed in the same direction as the pin grip.

- Aligned



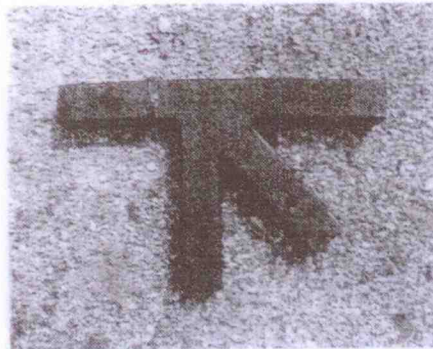
www.safariland.com 800.347.1200

SAFARILAND Together, We Serve Lives.

### Assembly



- Attach Positional Head.
  - Add 1' or 2' extension out to the breaching head position.



www.safariland.com 800.347.1200

SAFARILAND Together, We Serve Lives.

NOTES

---

---

---

---

---

---

---

---



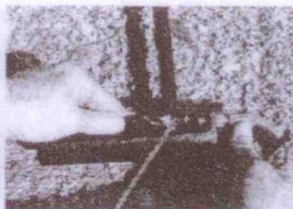
## Assembly



- Arm Pin gun with 12ga primer and secure onto pin grip by screwing together



12ga. Primer here



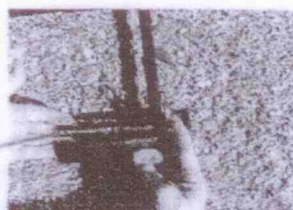
Screw two ends into pin grip



Tighten by hand



Secure safety clip



Insert punch and Attach lanyard

www.safariland.com 888.347.1200

SAFARILAND Together, We Save Lives.™

## Assembly



- Double Pin Gun assembly



www.safariland.com 888.347.1200

SAFARILAND Together, We Save Lives.™

NOTES

---

---

---

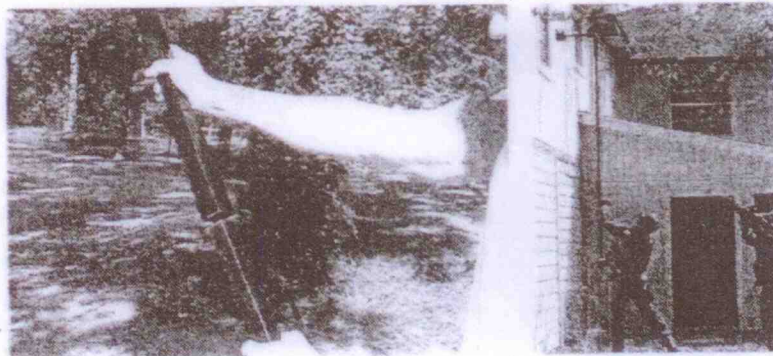
---

---

### Assembly



- Extend pole to necessary length by attaching 3' extensions if needed
  - Usually, extensions are not necessary for a one story objective



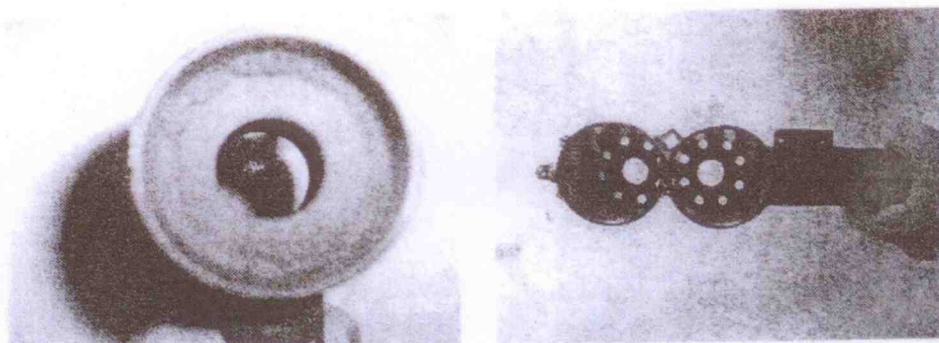
www.safariland.com 800.347.1200

**SAFARILAND** Together, We Save Lives.™

### Assembly



- Position so that the largest open port will be facing up when inserted into a window



www.safariland.com 800.347.1200

**SAFARILAND** Together, We Save Lives.™

NOTES

---

---

---

---

---

---

---

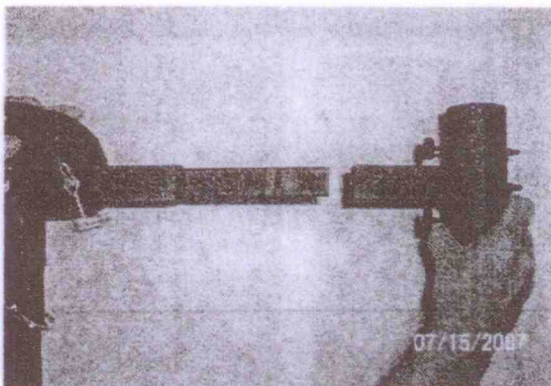
---



## Assembly



- Secure the WallBanger breaching head in the anticipated position for a correct deployment into the objective. (vertical position)



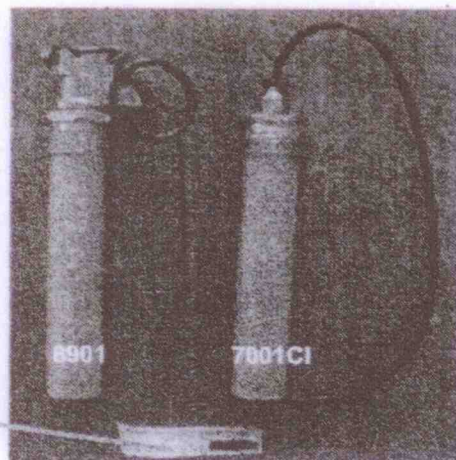
www.safariland.com 800.347.1230

SAFARILAND Together, We Save Lives.

## Two different types of Distraction Devices



- Store in an "approved" cool, dry, controlled location



ATF serial number label

www.safariland.com 800.347.1230

SAFARILAND Together, We Save Lives.

NOTES

---



---



---



---



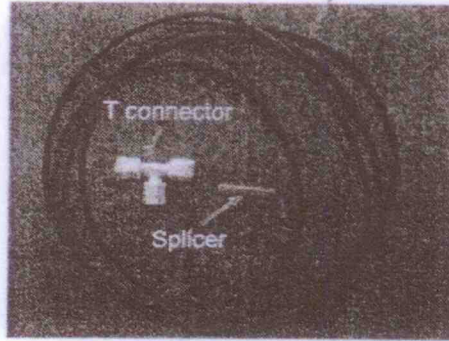
---

### Arming

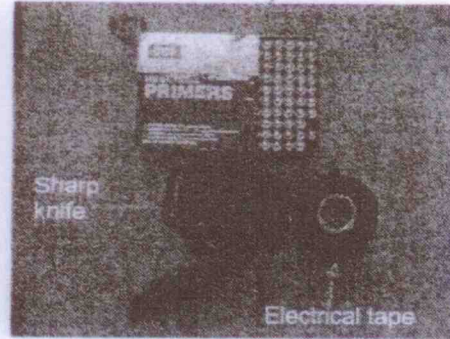


- Necessary accessories

Thermal Tubing



Shotgun primers



www.safariland.com

800.347.1200

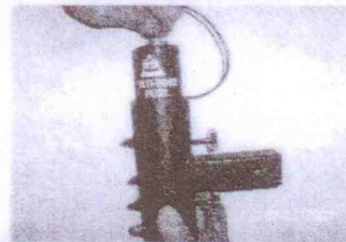
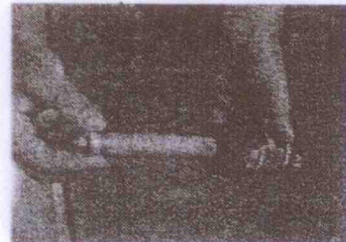
SAFARILAND

Together, We Save Lives.™

### Arming Single WallBanger



- Insert 7001 CI into the Multi Port Plus
- Insert body into breaching head and secure the thumb screws tightly by hand



www.safariland.com

800.347.1200

SAFARILAND

Together, We Save Lives.™

NOTES

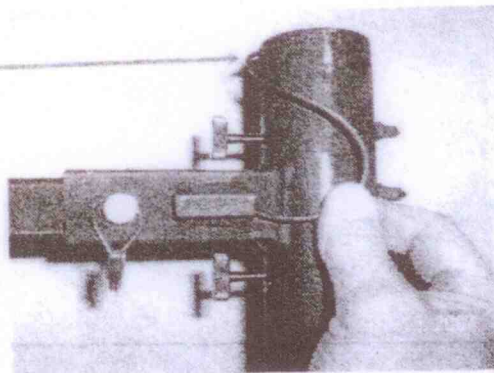


## Arming



- Connect shock tube by running it through protective slot and channel

- Slit for shock tube



- Insert pin gun with safety

www.safariland.com

800.347.5200

**SAFARILAND**

Together, We Save Lives.™

## Arming Double WallBanger



- Insert one or two 7001 CI into the Double WallBanger
- Run both shock tubes back to pin gun handle through channels

Insert 7001CI



Feed Thermal Tubing



Complete Thermal Tubing



www.safariland.com

800.347.5200

**SAFARILAND**

Together, We Save Lives.™

NOTES

---

---

---

---

---

---

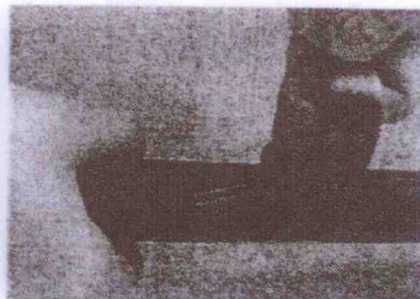
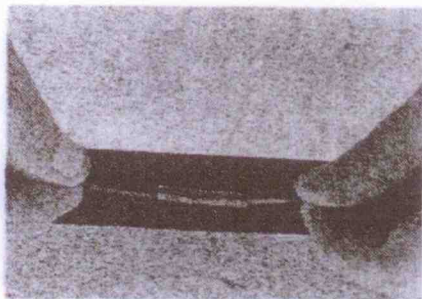
---

---

## Arming



- Complete thermal tubing connection
- Start from munitions back to pin gun
- Secure all connections (tape)



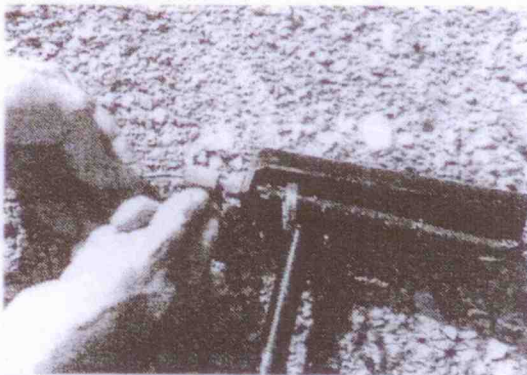
www.safariland.com 800.347.1200

SAFARILAND Together, We Save Lives.™

## Arming



- Complete thermal tubing connection
- Start from munitions back to pin gun
- Secure all connections (tape)



www.safariland.com 800.347.1200

SAFARILAND Together, We Save Lives.™

NOTES

---



---



---



---



## Team Assignments



- Transporting TheWallBanger
- Breaching head down

Cover Officer



www.safariland.com

800.347.1200

SAFARILAND

Together, We Save Lives.™

## Approach



- Noise/light discipline
- Subdued LED
- Remove safety
- Index pin gun trigger



Thumb holds punch securely

- Direction of breaching head (vertical)

www.safariland.com

800.347.1200

SAFARILAND

Together, We Save Lives.™

NOTES

---

---

---

---

---

---

---

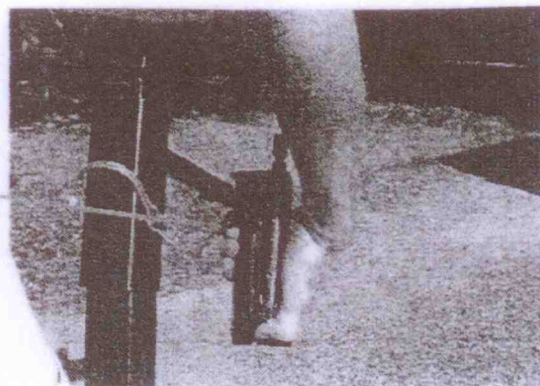
---

### Approach



- Position thumb on pin gun (punch)

Lanyard is threaded through safety



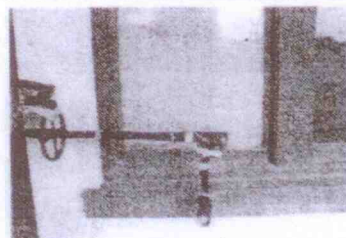
www.safariland.com 800.347.1200

SAFARILAND Together, We Save Lives.™

### Breach Point



- Index breaching head to location
  - (center of window)



- Find a position to operate from
  - (cover/concealment)



www.safariland.com 800.347.1200

SAFARILAND Together, We Save Lives.™

NOTES

---

---

---

---

---

---

---

---



## Position of the WallBanger on a FIRST STORY window



- Near the top of the window!!!

CORRECT



INCORRECT



www.safariland.com 800.347.1200

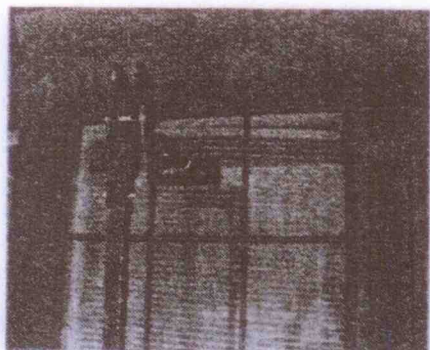
SAFARILAND Together, We Save Lives.™

## Position of the WallBanger on a SECOND STORY window

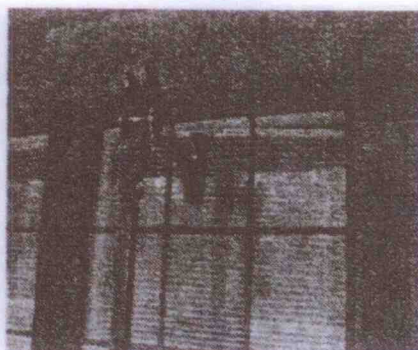


- Near the top of the window!!!

INCORRECT



CORRECT



www.safariland.com 800.347.1200

SAFARILAND Together, We Save Lives.™

NOTES

---

---

---

---

---

---

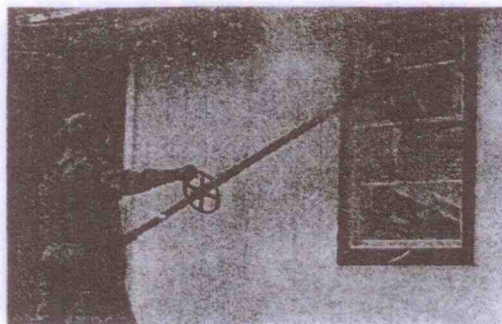
---

---

### Breach Point



- Positive breach



- Confirm breach and look at pin gun
- Push the Pin Gun
- Confirm initiation

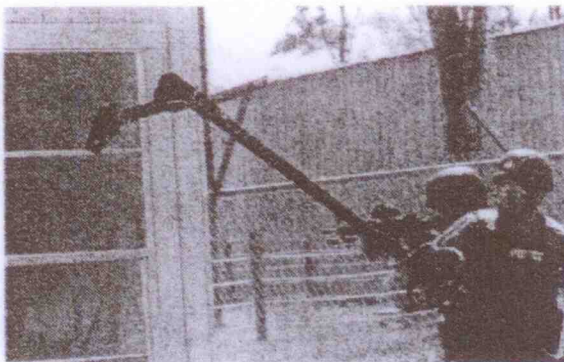
www.safariland.com 800.347.1200

SAFARILAND Together, We Save Lives.

### Breach Point



- Double WallBanger (second deployment)
- Move to second location and repeat
- Push the second pin gun



www.safariland.com 800.347.1200

SAFARILAND Together, We Save Lives.

NOTES

---

---

---

---

---

---

---

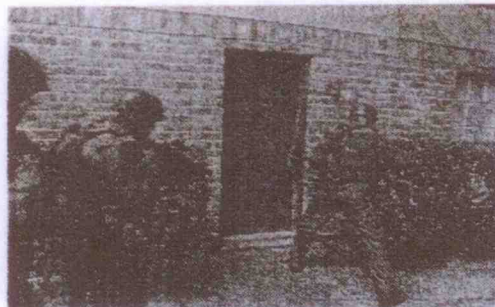
---



## Breach Point



- Initiation
  - Maintain cover/concealment
  - Absorb recoil
  - Discard or remove
  - Secondary assignments
- Malfunctions
  - Pin gun/push again
  - Fail to initiate
  - Remove and make safe



www.safariland.com 800.347.1235

**SAFARILAND** Together, We Save Lives.™

## Breach Point



- Dismantle/Inspection/Storage
  - Move to a safe area
  - Remove expended munitions
  - Remove excess residue
  - Carefully inspect
  - Remove hitch pins
  - Remove pin gun
  - Long-term storage requires extra cleaning

www.safariland.com 800.347.1235

**SAFARILAND** Together, We Save Lives.™

NOTES

---

---

---

---

---

### Log Book for Double WallBanger



- Inspect, clean and store
- Log Usage information

This program just gets you started.  
The real learning comes with using it.  
Train, test, evaluate, come to your own conclusions

www.safariland.com

800.347.1230

**SAFARILAND**

Together, We Save Lives.™

### Features and Benefits



- 90 degree option that allows less operator exposure to windows
- Aluminum poles are light and allow second story deployment
- Breaching cleats defeat most types of glass
- Double WallBanger ports most gases up for safer deployment
- Always in control of the Distraction Device as opposed to hand deployment
- Multiple distractions in multiple directions creates the MOSS principle

www.safariland.com

800.347.1230

**SAFARILAND**

Together, We Save Lives.™

NOTES

---

---

---

---

---

---

---

---