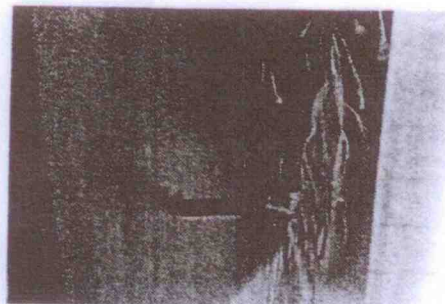


Features and Benefits



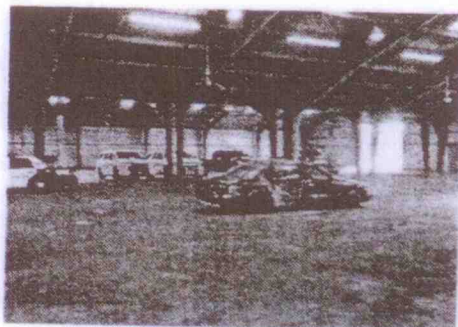
- Less mechanical process of pull pin systems equals less things that can go wrong. Pictured here is a spoon from a DD that was on a pole. It flew across a room and stuck into a cabinet.



www.safariland.com 800.347.1200

SAFARILAND Together, We Save Lives.™

DoubleWallbanger on a vehicle



www.safariland.com 800.347.1200


SAFARILAND Together, We Save Lives.™

NOTES



SECTION TWO | OC BLASTER






Course Schedule

- Practical Exercise
 - Assembly
 - Arming
 - Rehearsals
 - Dry fires
 - Initiations
- Classroom
 - Video review
 - Critiques
 - Post Test
 - Certificates

www.safariland.com
800.247.1200

SAFARILAND | Together, We Save Lives.™



Planning

- Appropriate use
- Rehearsals
 - Mentally and physically brief the team
 - Signals and communication
 - Primary and secondary options
- Evaluation of target
 - Construction of windows or area for deployment
 - Screens
 - Glass construction
 - Burglar bars
 - Attic entries
 - Use of OC into the objective

www.safariland.com
800.247.1200

SAFARILAND | Together, We Save Lives.™

NOTES

Planning (continued)



- Safety concerns
 - Children and Elderly
 - Early warning issues
 - Environmental and safety concerns
 - Firefighting equipment
 - Officer down procedures
 - Abort or bunker options

www.safariland.com 800.347.1200

SAFARILAND Together, We Save Lives.™

Planning (continued)



- Team Assignments
- Choosing a grenadier
- Location in stack
- Transporting the "OC Blaster"
- Cover Man assignment
- Preparing the "OC Blaster"
- Inspection
 - Cracks, defects, breaks, abnormalities
- Assembly
 - Handle/rotary head
 - Angle adjustment
 - Secure the OC Blaster
 - Vertical or horizontal placement
 - Check hitch pins

www.safariland.com 800.347.1200

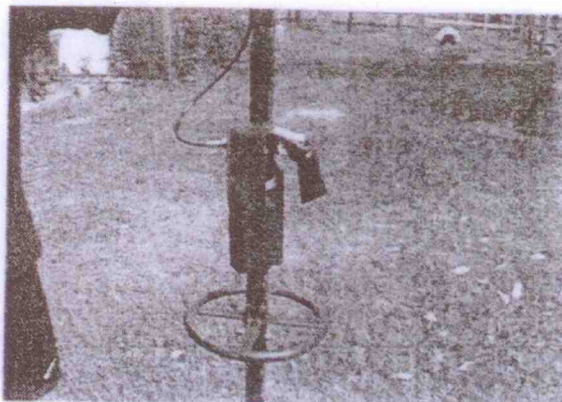
SAFARILAND Together, We Save Lives.™

NOTES

Arming



- Connect MK9 to handle



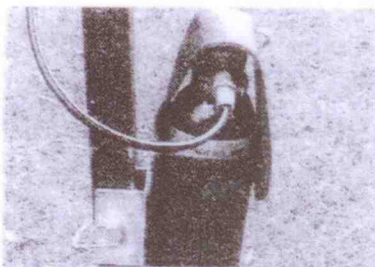
www.safariland.com 800.347.1200

SAFARILAND Together, We Save Lives.™

Arming



- Connect hose from MK9 to OC Blaster
- Check handle position
- Secure and check all connections
- Index location of the MK9



www.safariland.com 800.347.1200

SAFARILAND Together, We Save Lives.™

NOTES

Approach



- Noise/light discipline
 - Subdued LED
 - Remove safety
 - Direction of breaching cleats

www.safariland.com 800.347.1200

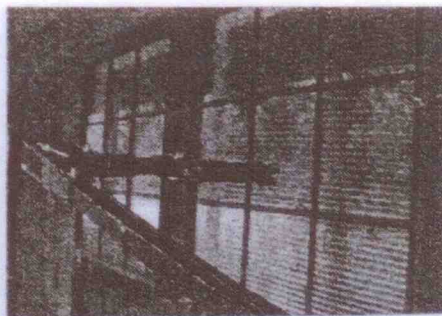
SAFARILAND

Together, We Save Lives.™

Breach Point



- Index OC Blaster to location (window)
- Find a position to operate from (cover/concealment)
- Positive breach
- Index MK9
- Confirm deployment of OC (and fan)



www.safariland.com 800.347.1200

SAFARILAND

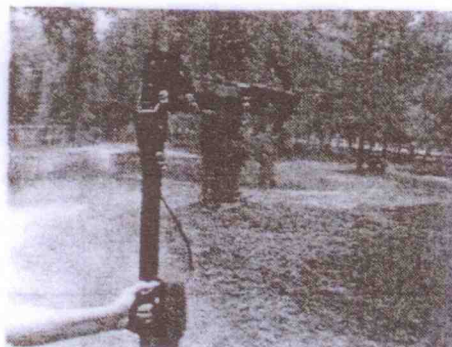
Together, We Save Lives.™

NOTES

Break and Rake



- Maintain cover/concealment
- Aluminum pole can be used for "minor" glass and curtain removal
- Steel pole can be used for medium break and rake
- Discard or remove



www.safariland.com 800.347.1200

SAFARILAND Together, We Save Lives.™

Malfunctions



- Press handle again
- Leak in hose
- Secondary assignments
- Remove and make safe

www.safariland.com 800.347.1200

SAFARILAND Together, We Save Lives.™

NOTES

Dismantle/Inspection/Storage**SAFARILAND**
TRAINING GROUP

- Move to a safe area
- Remove expended munitions in MK9
- Remove excess residue
- Hose can be cleaned or discarded
- Carefully inspect
- Remove hitch pins
- Long-term storage requires extra cleaning

www.safariland.com 800.347.1200**SAFARILAND**

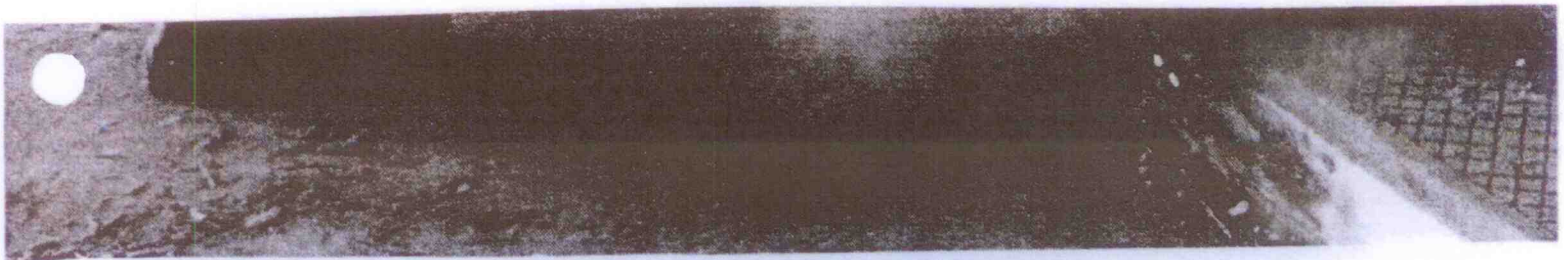
Together, We Save Lives.™

NOTES

NOTES



SECTION THREE | DOORKEY





"DOORKEY" INSTRUCTOR COURSE

This course is designed to provide you with the basic skills necessary to safely and effectively operate and instruct the use of the "DoorKey" when breaching into a stronghold objective is required.



www.safariland.com 800.347.1200

SAFARILAND Together, We Save Lives.™



Course Schedule:

- Classroom
 - Pre-test
 - Lecture
 - Q&A
- Practical Exercise
 - Assembly
 - Arming
 - Rehearsals
 - Dry fires
 - Initiations
- Classroom
 - Video review
 - Critiques
 - Post Test
 - Certificates

www.safariland.com 800.347.1200

SAFARILAND Together, We Save Lives.™

NOTES

Introductions

- Play video
- Safety rules
 - Safety officers
 - Cease fire
 - Protective clothing
 - No horseplay
 - Arming the device
- Defense Technology Safe Handling Procedures



www.safariland.com 800.347.1290

SAFARILAND Together, We Save Lives.™

Planning

- Appropriate use
- Rehearsals
 - Mentally and physically brief the team
 - Signals and communication
 - Primary and secondary options
- Evaluation of target
 - Construction of door to be breached
 - Steel veneer
 - Solid wood
 - Wood veneer over practical board
 - Hollow core
 - Screen door?
 - Storm door?
 - Burglar bars?



www.safariland.com 800.347.1290

SAFARILAND Together, We Save Lives.™

NOTES

Planning (continued)



- Safety concerns
 - Children and Elderly
 - Possible projectiles or fragmentation of the door into the objective
 - Explosive/flammable environment
 - Early warning issues
 - Firefighting equipment
 - Officer down procedures
 - Abort or bunker options

www.safariland.com 800.347.1230

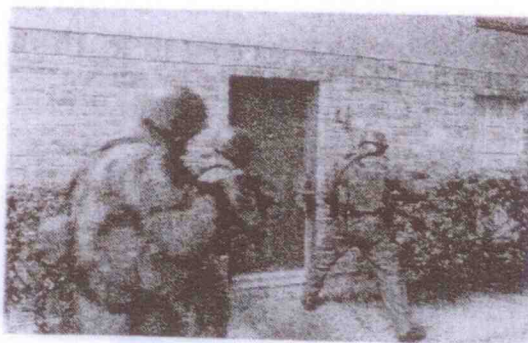
SAFARILAND

Together, We Save Lives.™

Team Assignments



- Choosing a grenadier
 - Strong
 - Athletic/Coordinated
 - Experienced
 - Operator Certified



- Position of cover man on the Breaching team

www.safariland.com 800.347.1230

SAFARILAND

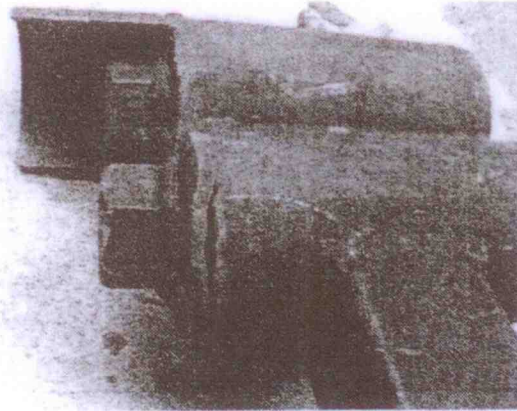
Together, We Save Lives.™

NOTES

Preparing the DoorKey



- Inspection
 - Cracks
 - Defects
 - Breaks
 - Abnormalities



www.safariland.com

800.347.1230

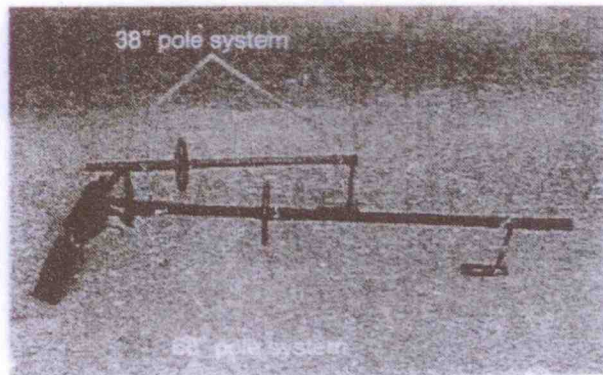
SAFARILAND

Together, We Save Lives.™

Preparing TheWallBanger



- Choosing a pole
 - Steel vs. Aluminum
 - 68" vs. 38"



www.safariland.com

800.347.1230

SAFARILAND

Together, We Save Lives.™

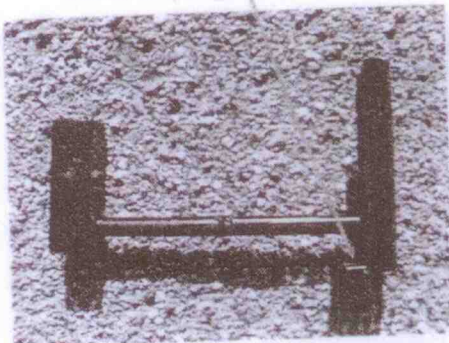
NOTES

Assembly

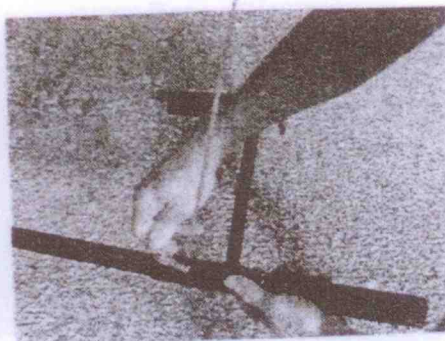


- Pin Grip Handle on steel pole with hitch pin (holes to the rear)

Holes for pin guns to the rear



Hitch pins into pole



www.safariland.com

800.547.1200

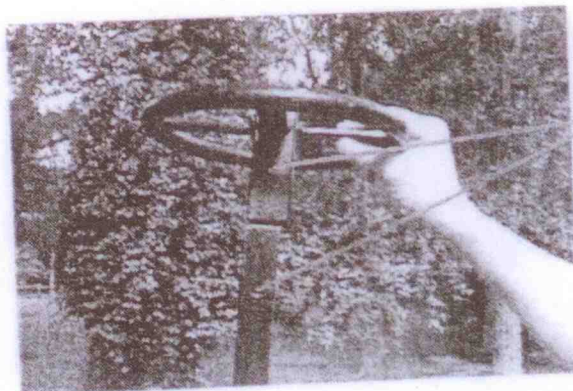
SAFARILAND

Together, We Save Lives.™

Assembly



- Place Wheel Handle onto pole



Line up holes on one side

www.safariland.com

800.547.1200

SAFARILAND

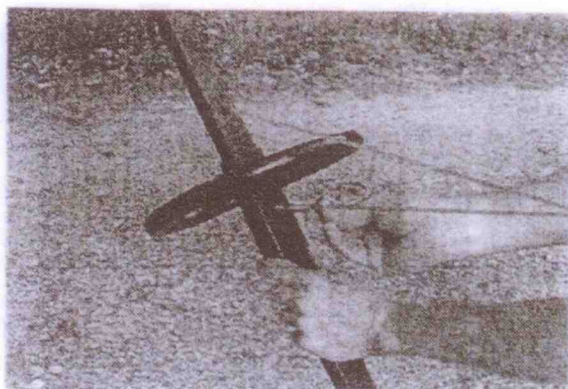
Together, We Save Lives.™

NOTES

Assembly



- Use Hitch pin to attach Wheel Grip Handle



Line up holes on one side

Three holes on the pole are for ergonomic reasons

Forward position is usually best for the weight of the DoorKey

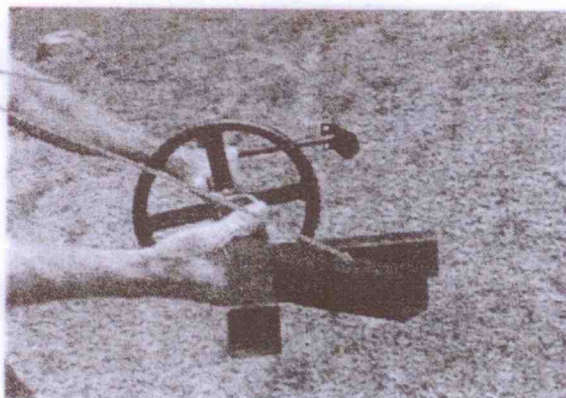
www.safariland.com 800.347.1200

SAFARILAND Together, We Save Lives.™

Assembly



- Attach 3-Prong Fixed Positional Head and adjust to desired angle. Fixed head is usually pointed in the same direction as the pin grip.
- Aligned



www.safariland.com 800.347.1200

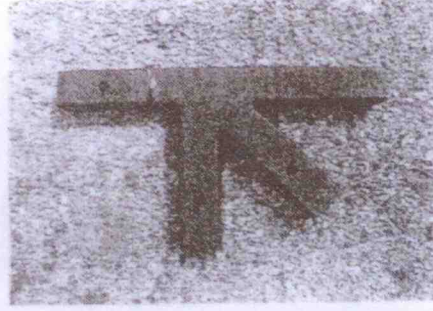
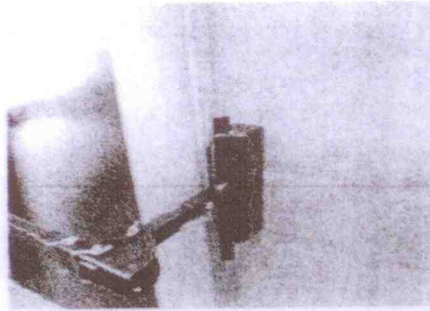
SAFARILAND Together, We Save Lives.™

NOTES

Assembly



- 45 degrees for most doors
- Straight for doors that cannot be angled
- 90 degrees for positions that need the most cover



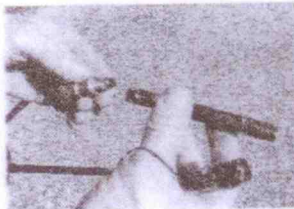
www.safariland.com 800.347.1200

SAFARILAND Together, We Save Lives.™

Assembly



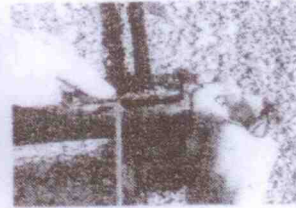
- Arm Pin gun with 12ga primer and secure onto pin grip by screwing together



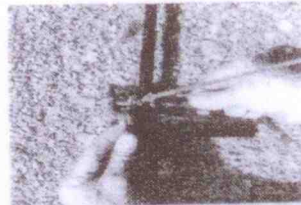
12ga. Primer here



Screw two ends into pin grip

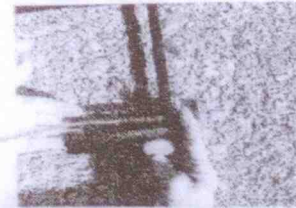


Tighten by hand



Secure safety clip

Insert punch and Attach lanyard



www.safariland.com 800.347.1200

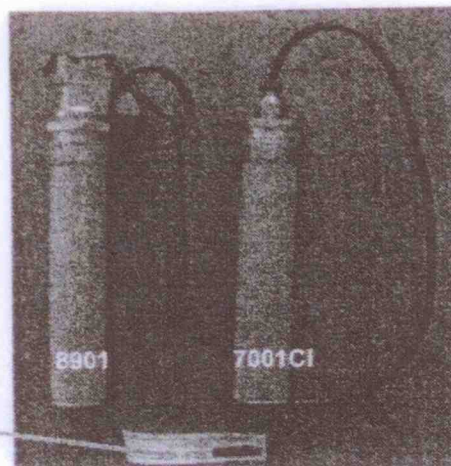
SAFARILAND Together, We Save Lives.™

NOTES

Two different types of Distraction Devices



- Store in an "approved" cool, dry, controlled location



ATF serial number label

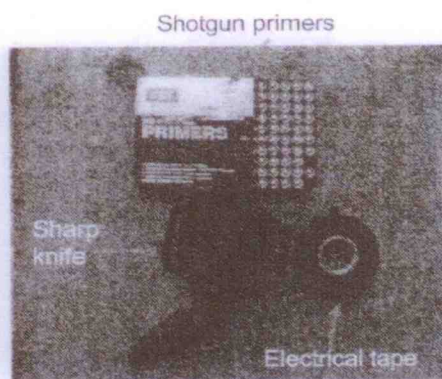
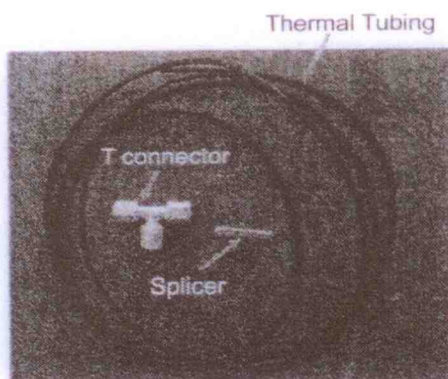
www.safariland.com 800.347.1200

SAFARILAND Together, We Save Lives.™

Arming



- Necessary accessories



www.safariland.com 800.347.1200

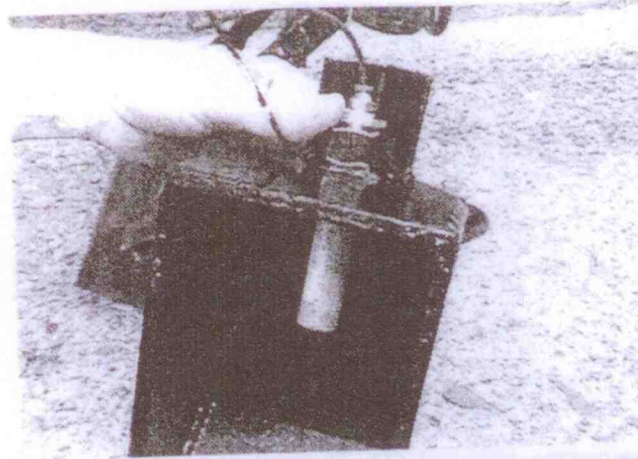
SAFARILAND Together, We Save Lives.™

NOTES

Assembly



- Insert munitions into DoorKey. (tape)



www.safariland.com

800.347.1200

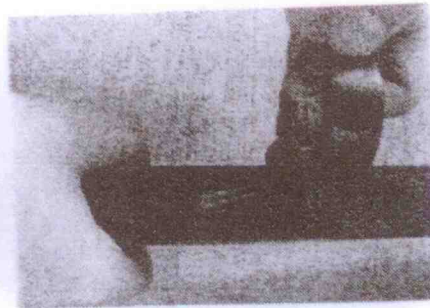
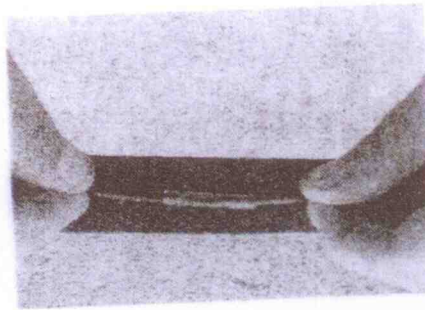
SAFARILAND

Together, We Save Lives.™

Arming



- Complete thermal tubing connection
- Start from munitions back to pin gun
- Secure all connections (tape)



www.safariland.com

800.347.1200

SAFARILAND

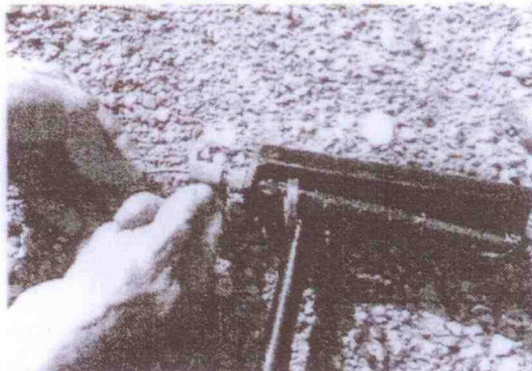
Together, We Save Lives.™

NOTES

Arming



- Complete thermal tubing connection
- Start from munitions back to pin gun
- Secure all connections (tape)



www.safariland.com 888.347.1299

SAFARILAND Together, We Save Lives.™

Team Assignments



- Transporting the DoorKey
- Breaching head down

Cover Officer



www.safariland.com 888.347.1299

SAFARILAND Together, We Save Lives.™

NOTES

Approach



- Noise/light discipline
- Subdued LED
- Remove safety
- Index pin gun trigger



Thumb holds punch securely

- Direction of breaching head (vertical)

www.safariland.com

800.347.1290

SAFARILAND

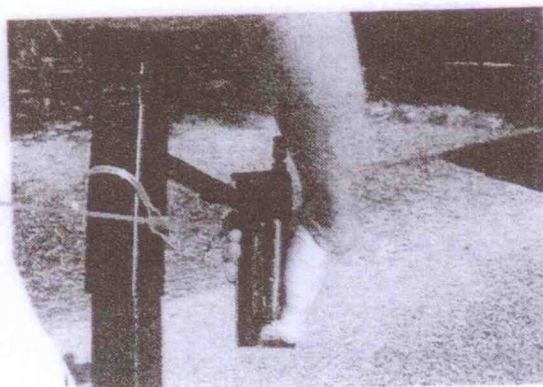
Together, We Save Lives.™

Approach



- Position thumb on pin gun (punch)

Lanyard is threaded through safety




www.safariland.com

800.347.1290

SAFARILAND


Together, We Save Lives.™

NOTES


SAFARILAND
 TRAINING GROUP


Breach Point

- Placing the DoorKey
 - Cover
 - Technique
 - Protective equipment
 - Hand placement
 - Double DoorKey



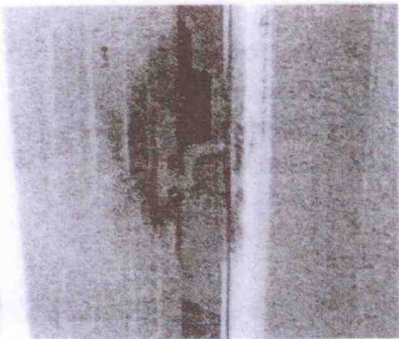
www.safariland.com 800.347.1200

SAFARILAND
 Together, We Save Lives.™


SAFARILAND
 TRAINING GROUP

Breach Point

- Positive breach
 - Confirm placement and look at pin gun
 - Absorb recoil
 - Secondary Assignments
 - Malfunction, press again
 - Call for secondary breacher
 - Remove and render safe
 - Defense Technology render safe procedures



www.safariland.com 800.347.1200

SAFARILAND
 Together, We Save Lives.™

NOTES

Sheetrock Wall Breaching



- Interior Sheetrock walls
 - No insulation
 - No stucco
 - No shiplap
 - Careful of plumbing, electrical, gas lines
 - Find stud locations inside the wall
 - Careful of the location of individuals inside the room you are breaching into

www.safariland.com 800.347.1200

SAFARILAND Together We Save Lives.™

Breach Point



- Dismantle/Inspection/Storage
 - Move to a safe area
 - Remove expended munitions
 - Remove excess residue
 - Carefully inspect
 - Remove hitch pins
 - Remove pin gun
 - Long-term storage requires extra cleaning

www.safariland.com 800.347.1200

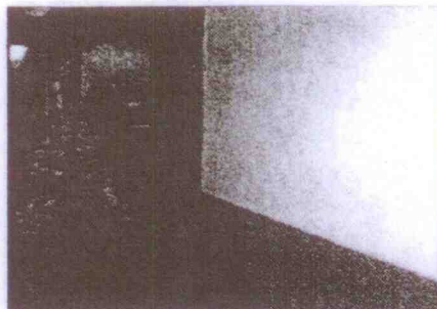
SAFARILAND Together We Save Lives.™

NOTES

Breach Point



Interior Breach; steel door, steel frame
Double WallBanger



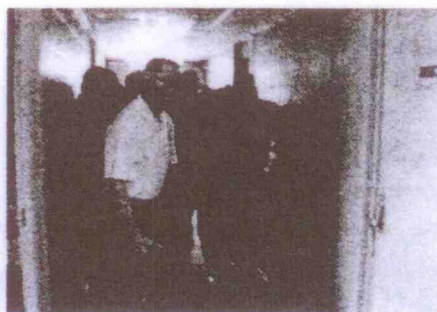
www.safariland.com 800.347.1290

SAFARILAND Together, We Save Lives.™

Interior breach



Solid wood door, metal frame

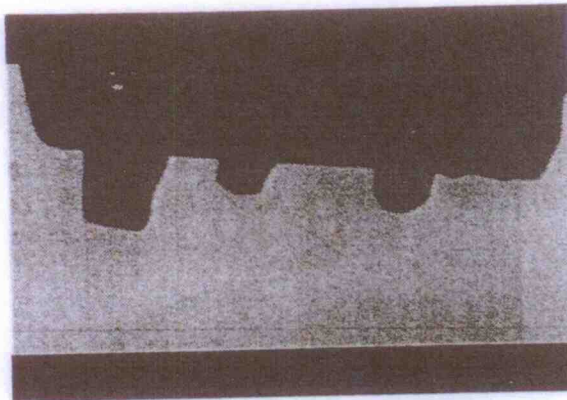


www.safariland.com 800.347.1290

SAFARILAND Together, We Save Lives.™

NOTES

Remote DoorKey System



www.safariland.com 800.347.1200

SAFARILAND Together, We Save Lives.™

Log Book for Double WallBanger



- Inspect, clean and store
- Log Usage information
 - Complete ALL blocks of information
 - Include pictures of results/damage
 - Return log book and device to LLS when completed

This program just gets you started.
The real learning comes with using it.
Train, test, evaluate, come to your own conclusions

www.safariland.com 800.347.1200

SAFARILAND Together, We Save Lives.™

NOTES

Thank You!!!



- Questions
- Review
- Test

www.safariland.com 800.347.1280

SAFARILAND

Together, We Save Lives.™

NOTES